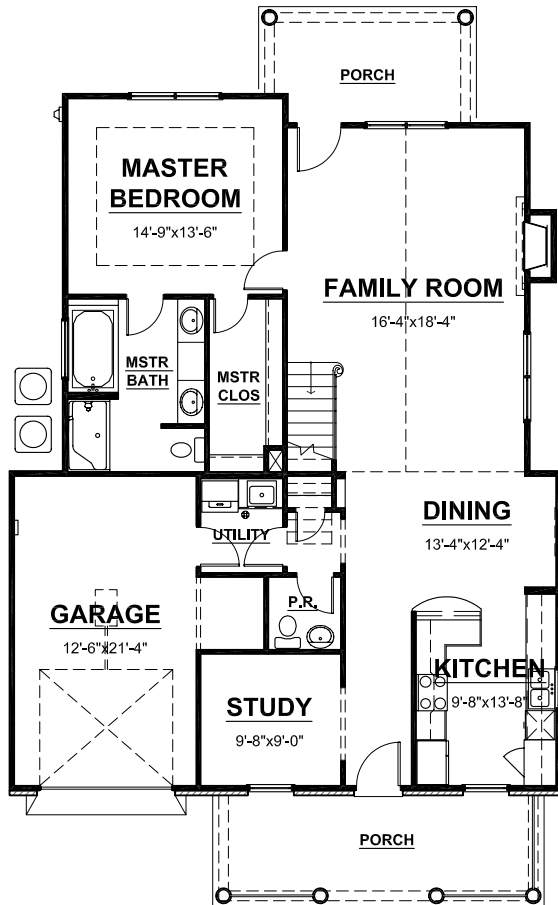


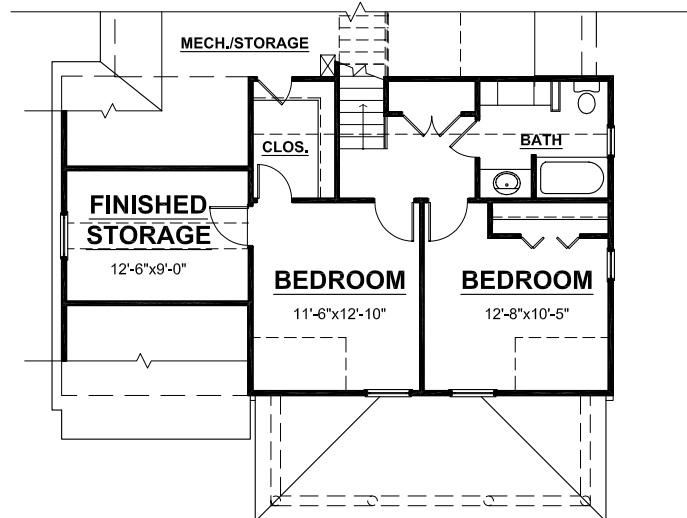
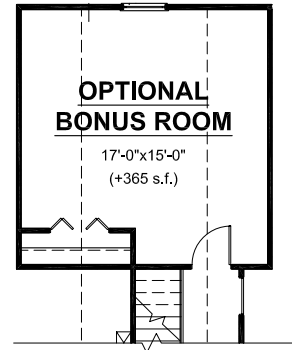
# The Villas at Fiddlers Green



## The Roarke II



**FIRST FLOOR**



**SECOND FLOOR**



APPROX. SQUARE FOOTAGE	
FIRST FLOOR FINISHED=	1,345 s.f.
SECOND FLOOR FINISHED=	676 s.f.
TOTAL FINISHED=	2,021 s.f.
GARAGE=	303 s.f.

- NOTES:
- 1) INFORMATION DEEMED RELIABLE BUT NOT GUARANTEED.
  - 2) PRICES ARE SUBJECT TO CHANGE WITHOUT NOTICE.
  - 3) ROOM SIZES ARE NOT GUARANTEED.
  - 4) SQUARE FOOTAGE SHOWN IS APPROXIMATE.

