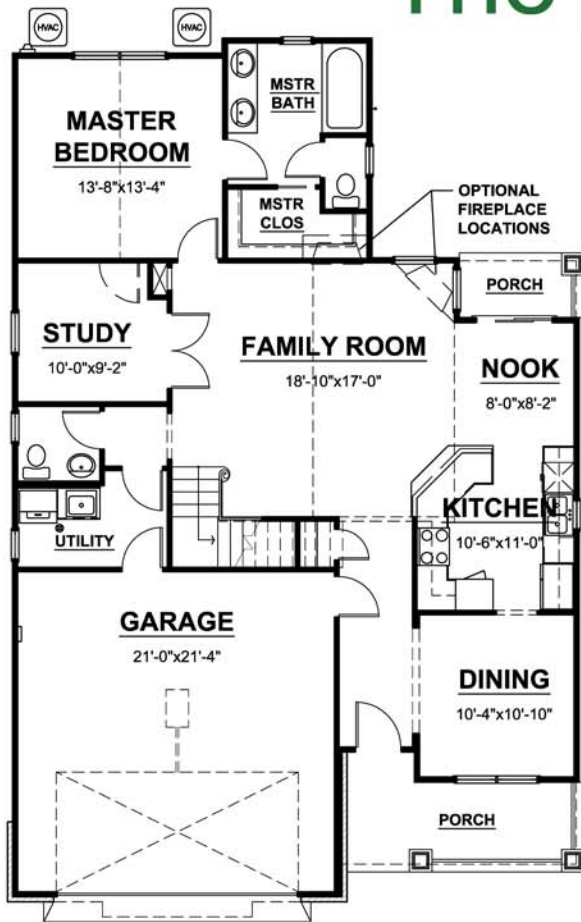


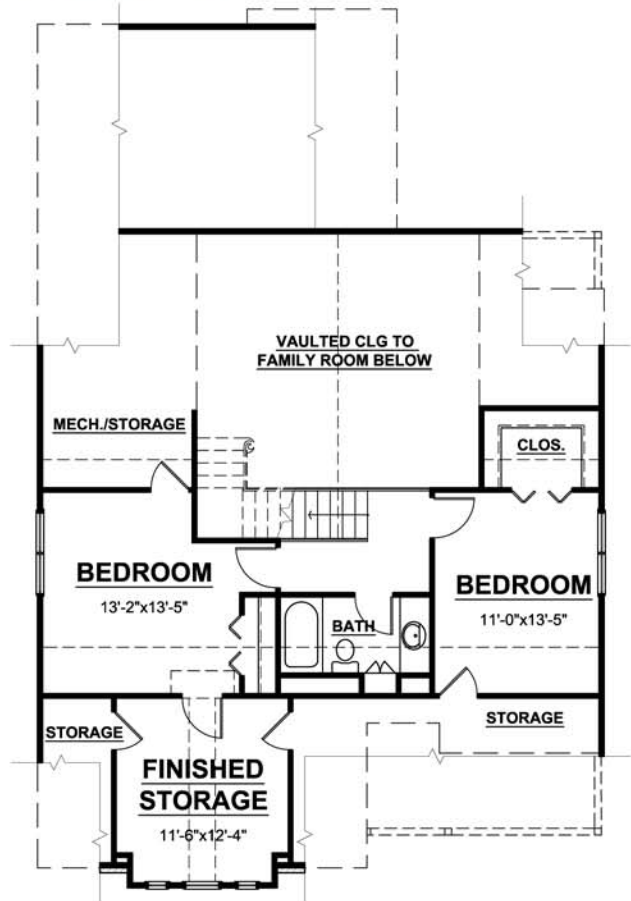
# The Villas at Fiddlers Green



## The Nora II



**FIRST FLOOR**



**SECOND FLOOR**



**APPROX. SQUARE FOOTAGE**

FIRST FLOOR FINISHED=	1,318 s.f.
SECOND FLOOR FINISHED=	717 s.f.
TOTAL FINISHED=	2,035 s.f.
GARAGE=	471 s.f.

**NOTES:**

- 1) INFORMATION DEEMED RELIABLE BUT NOT GUARANTEED.
- 2) PRICES ARE SUBJECT TO CHANGE WITHOUT NOTICE.
- 3) ROOM SIZES ARE NOT GUARANTEED.
- 4) SQUARE FOOTAGE SHOWN IS APPROXIMATE.

