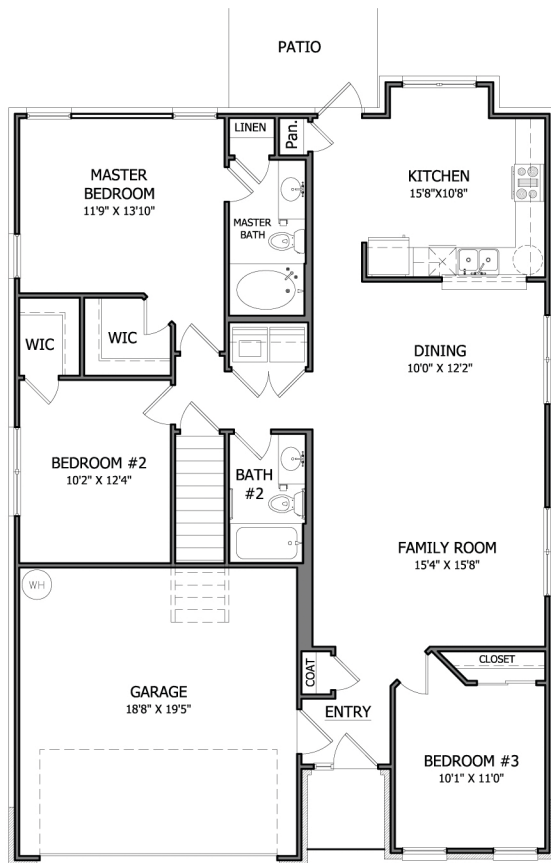


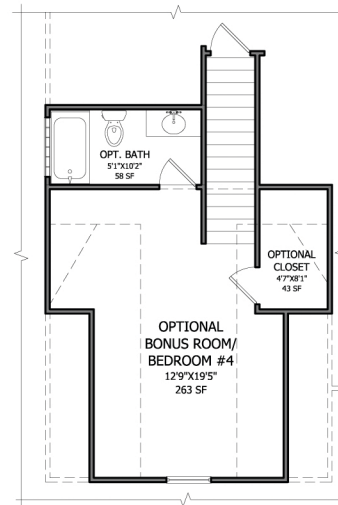
The Villas at Fiddlers Green



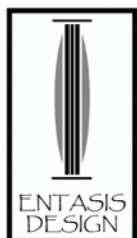
The Gavin



FIRST FLOOR



SECOND FLOOR



APPROX. SQUARE FOOTAGE	
FIRST FLOOR FINISHED=	1,406 s.f.
SECOND FLOOR FINISHED=	364 s.f.
TOTAL FINISHED=	1,770 s.f.
GARAGE=	376 s.f.

- NOTES:**
- 1) INFORMATION DEEMED RELIABLE BUT NOT GUARANTEED.
 - 2) PRICES ARE SUBJECT TO CHANGE WITHOUT NOTICE.
 - 3) ROOM SIZES ARE NOT GUARANTEED.
 - 4) SQUARE FOOTAGE SHOWN IS APPROXIMATE.

